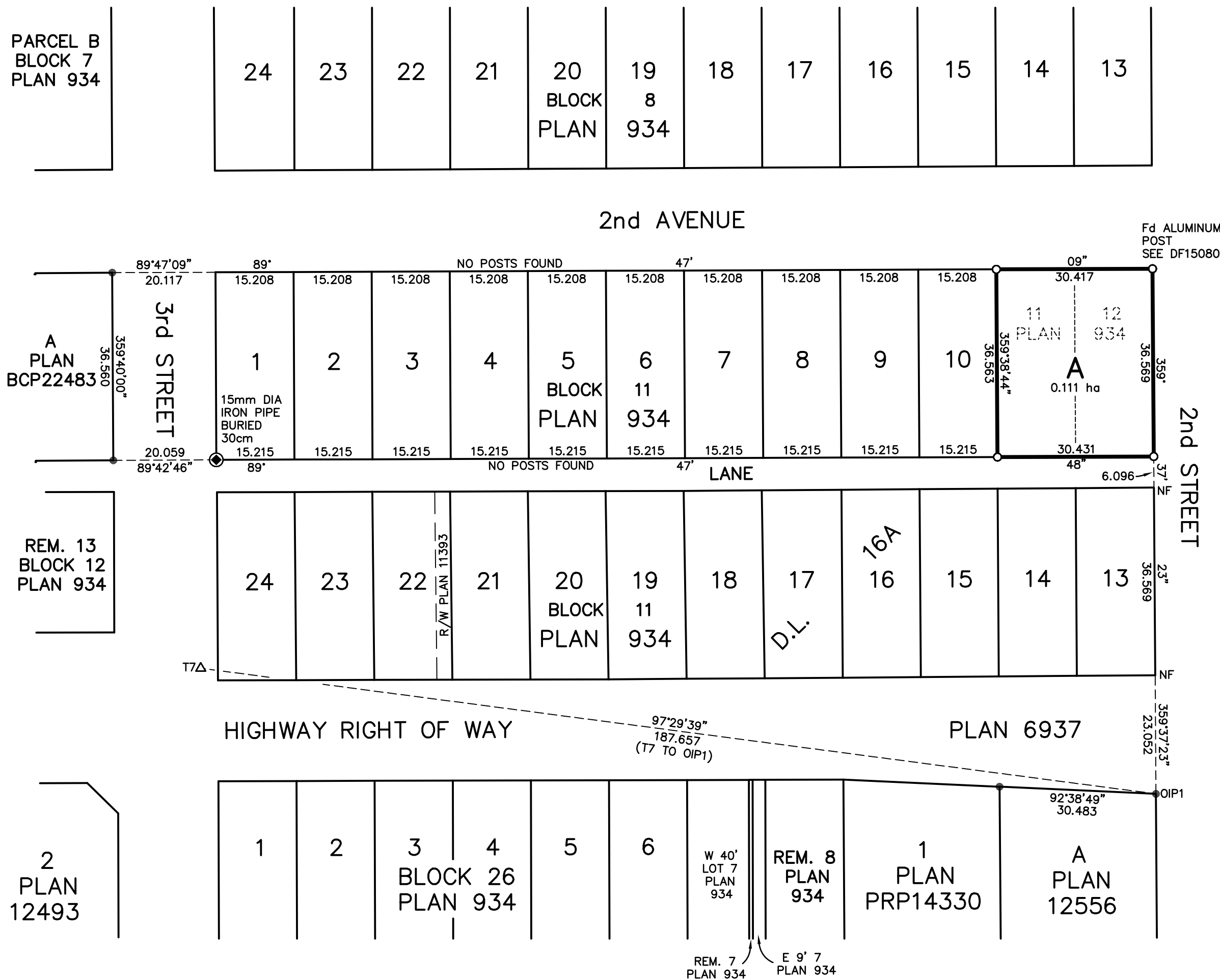


PLAN EPP63806



REFERENCE PLAN OF CONSOLIDATION OF LOTS 11 AND 12, BLOCK 11, DISTRICT LOT 16A, QUEEN CHARLOTTE DISTRICT, PLAN 934.

PURSUANT TO S.100(1)(b), LAND TITLE ACT.

BCGS 103F.030

SCALE 1:750



THIS PLAN LIES WITHIN THE SKEENA-QUEEN CHARLOTTE REGIONAL DISTRICT.

THE INTENDED PLOT SIZE OF THIS PLAN IS 559mm IN WIDTH BY 432mm IN HEIGHT (ANSI C) WHEN PLOTTED AT A SCALE OF 1:750.

LEGEND

UTM NAD83 (CSRS) 2002.0 ZONE 8 GRID BEARINGS ARE DERIVED FROM STATIC CARRIER PHASE GNSS OBSERVATIONS FROM HUB T7 TO OIP2 SHOWN HEREON. BEARINGS ARE REFERRED TO 135° WEST LONGITUDE, THE CENTRAL MERIDIAN OF UTM ZONE 8.

UTM COORDINATES DERIVED FROM STATIC DUAL-FREQUENCY GNSS OBSERVATIONS (4 HOURS) AT HUB T7 AND PROCESSED USING NRCAN'S PPP SERVICE.

THIS PLAN SHOWS HORIZONTAL GROUND-LEVEL DISTANCES. TO COMPUTE GRID DISTANCES, MULTIPLY GROUND-LEVEL DISTANCES BY THE AVERAGE COMBINED FACTOR OF 1.00006426. THE AVERAGE COMBINED FACTOR HAS BEEN DETERMINED BASED ON THE ELLIPSOIDAL ELEVATION OF HUB T7, BEING 1 METRES.

- DENOTES STANDARD IRON POST FOUND
- DENOTES STANDARD IRON POST SET
- △ DENOTES TRAVERSE HUB SET
- ⊙ DENOTES NON-STANDARD ROUND IRON POST FOUND
- PP DENOTES POSTING PLAN

THE FIELD SURVEY REPRESENTED BY THIS PLAN WAS COMPLETED BY DAVID J. DEDILUKE, BCLS (608) ON THE 21ST DAY OF JUNE, 2016.

HUB T7
 UTM N. 5904596.04 E. 694537.87
 NAD 83 (CSRS) 2002.0, ZONE 8 REFERENCE MERIDIAN: 135°
 COMBINED FACTOR FOR THIS HUB AND PLAN: 1.00006426.
 ESTIMATED HORIZONTAL POSITIONAL ACCURACY IS 0.02 m.

OIP1
 UTM N. 5904571.56 E. 694723.93
 NAD 83 (CSRS) 2002.0, ZONE 8 REFERENCE MERIDIAN: 135°
 COMBINED FACTOR: 1.00006446
 ESTIMATED HORIZONTAL POSITIONAL ACCURACY IS 0.02 m.