

**HAIDA GWAI /  
QUEEN CHARLOTTE  
ISLANDS**

**KEY PLAN  
NTS**

DRAWING INDEX	
SHEET No.	TITLE
1.	KEY PLAN, DRAWING INDEX
2.	SITE PLAN
3.	AREAS A, B, C, D, E, F
4.	AREAS G, H
5.	AREAS I, J, K

**QUEEN CHARLOTTE - SKIDEGATE LANDING  
MANAGEMENT COMMITTEE  
WATER SYSTEM UPGRADE 2002  
CONTRACT No. 163.4.4**

*"These Record Drawings have been prepared based on information provided by the Committee and Kootenay Engineering Ltd. Dayton & Knight Ltd. has not verified the accuracy or completeness of the information provided to them and does not warrant the accuracy or completeness of these Record Drawings. Users of these Record Drawings assume all risk of loss resulting from their use."*

ACAD DWG. 163-4-4A 1:1 03-03-17

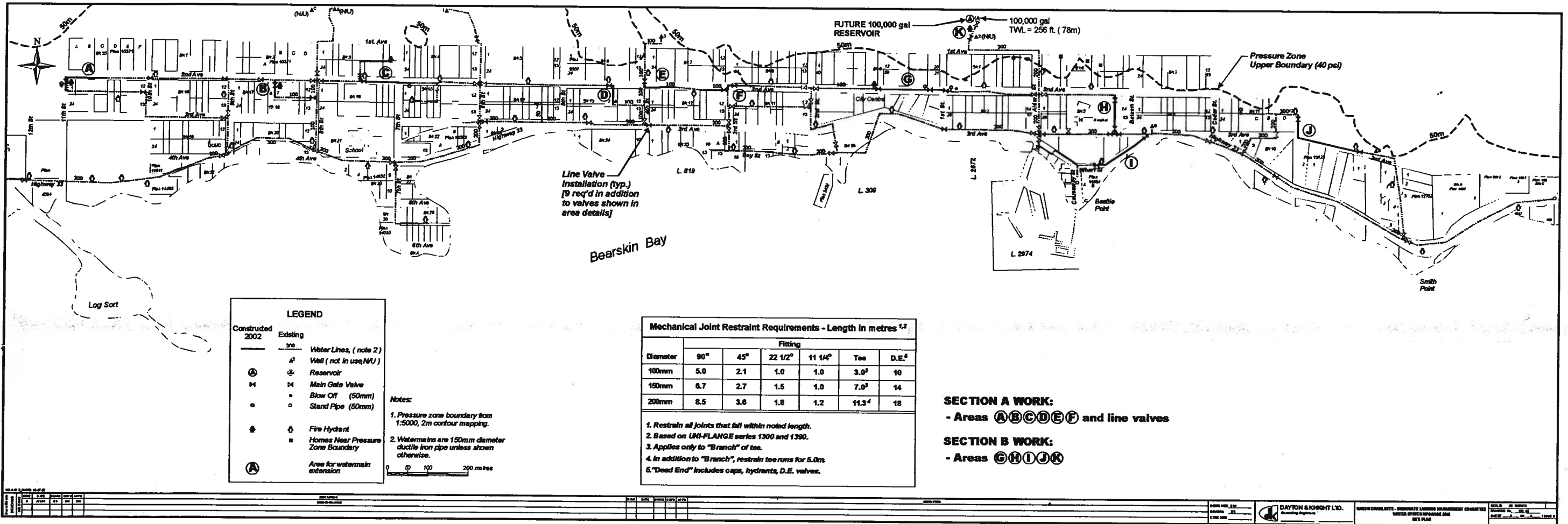
ISSUE	DATE	DRAWN	CHK'D	APP'D	DESCRIPTION	ISSUE	DATE	DRAWN	CHK'D	APP'D	DESCRIPTION
B	MAR17/03	PTL	B.W.	B.W.	RECORD DRAWING						

DESIGNED BW  
DRAWN ES  
CHECKED \_\_\_\_\_



QUEEN CHARLOTTE - SKIDEGATE LANDING MANAGEMENT COMMITTEE  
WATER SYSTEM UPGRADE 2002  
KEY PLAN, DRAWING INDEX

SCALE: NTS  
DRAWING No. 163.4.4  
SHEET 1 OF 5 ISSUE B  
THIS DRAWING REDUCED TO HALFSIZE



**LEGEND**

Constructed 2002	Existing	Description
—	3/0	Water Lines, (note 2)
⊠	⊠	Well (not in use/NU)
⊕	⊕	Reservoir
⊞	⊞	Main Gate Valve
⊙	⊙	Blow Off (50mm)
⊚	⊚	Stand Pipe (50mm)
⊕	⊕	Fire Hydrant
⊞	⊞	Homes Near Pressure Zone Boundary
⊞	⊞	Area for watermain extension

**Notes:**

1. Pressure zone boundary from 1:5000, 2m contour mapping.
2. Watermains are 150mm diameter ductile iron pipe unless shown otherwise.

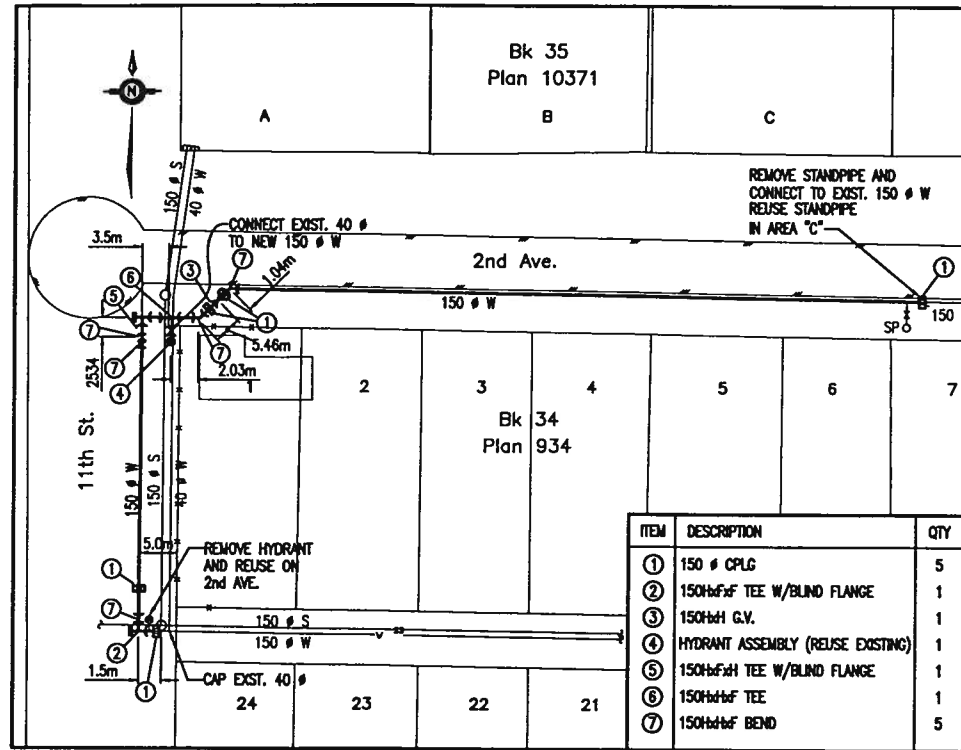
**Mechanical Joint Restraint Requirements - Length in metres <sup>1,2</sup>**

Diameter	Fitting					
	90°	45°	22 1/2°	11 1/4°	Tee	D.E. <sup>5</sup>
100mm	5.0	2.1	1.0	1.0	3.0 <sup>3</sup>	10
150mm	8.7	2.7	1.5	1.0	7.0 <sup>3</sup>	14
200mm	8.5	3.6	1.8	1.2	11.3 <sup>4</sup>	18

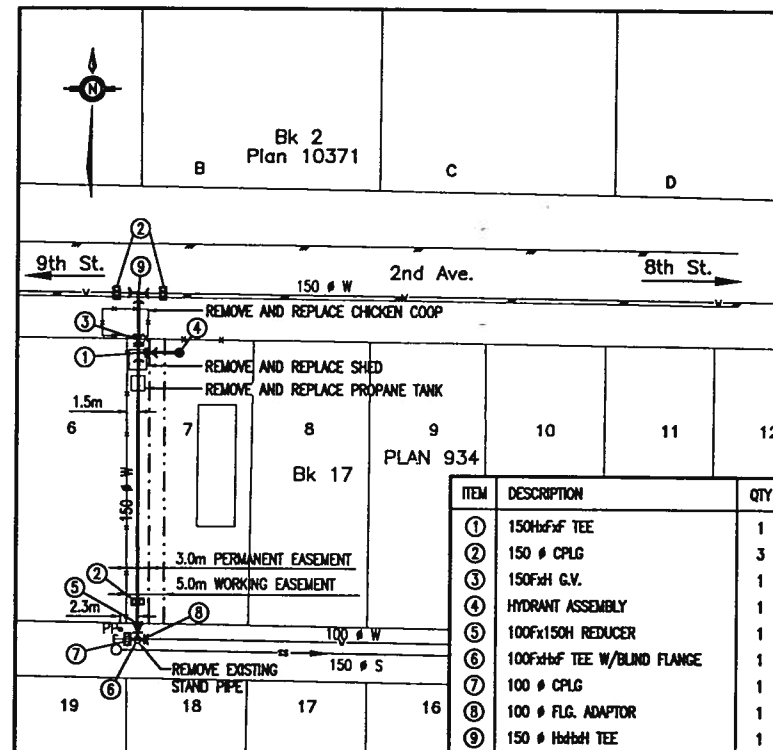
**1. Restrain all joints that fall within noted length.**  
**2. Based on UNI-FLANGE series 1300 and 1390.**  
**3. Applies only to "Branch" of tee.**  
**4. In addition to "Branch", restrain tee runs for 5.0m.**  
**5. "Dead End" includes caps, hydrants, D.E. valves.**

**SECTION A WORK:**  
 - Areas **(A)(B)(C)(D)(E)(F)** and line valves

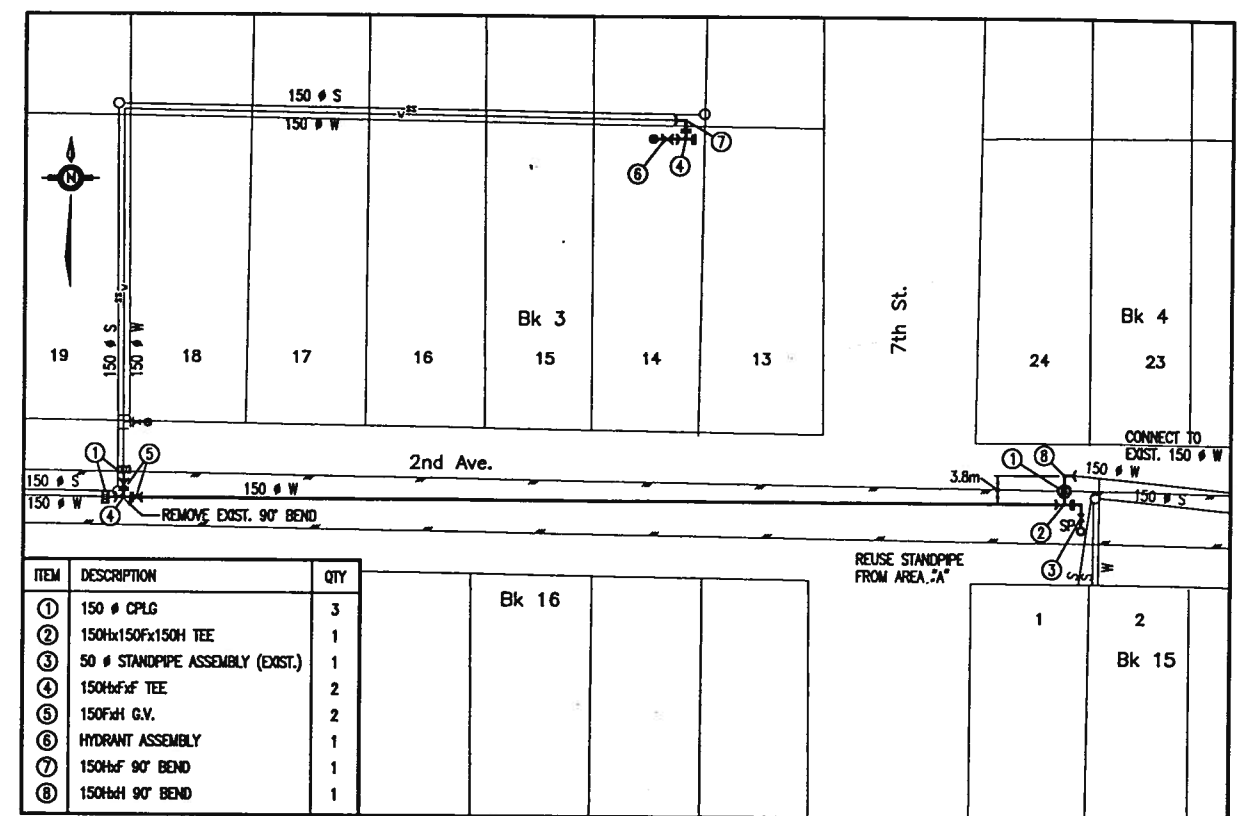
**SECTION B WORK:**  
 - Areas **(G)(H)(I)(J)(K)**



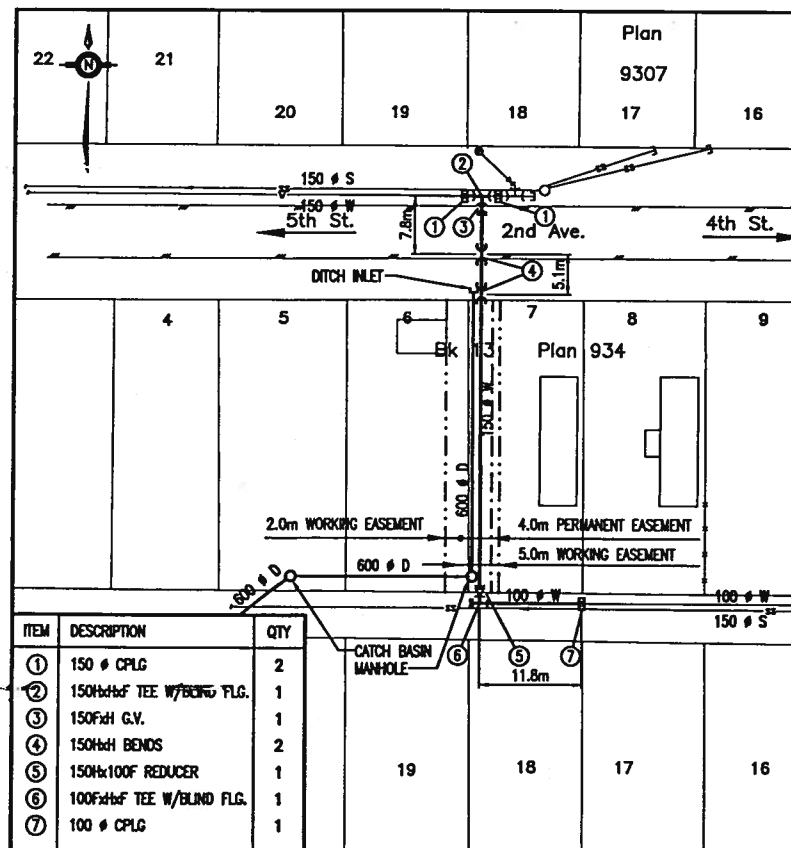
AREA "A"



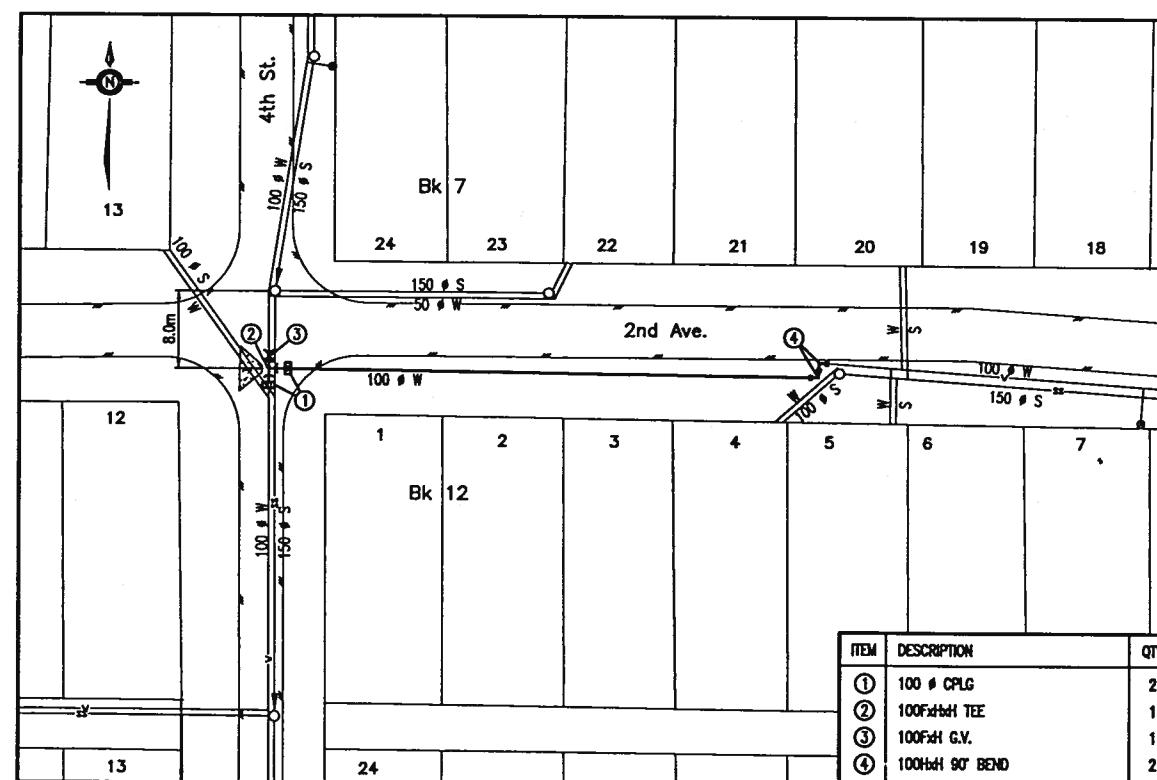
AREA "B"



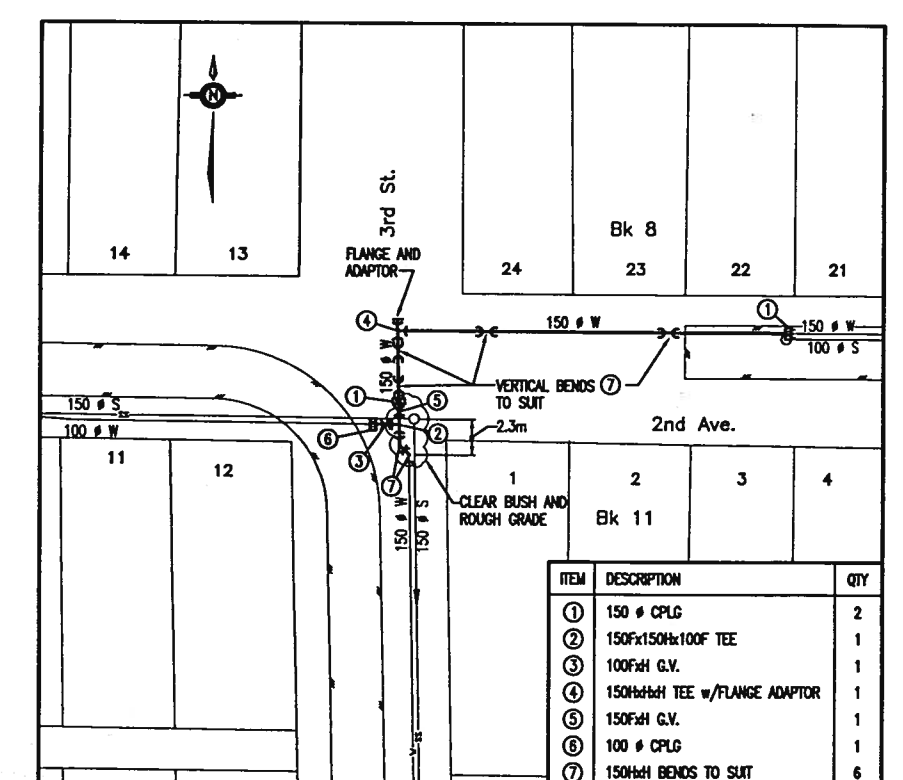
AREA "C"



AREA "D"



AREA "E"



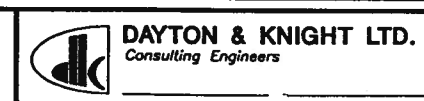
AREA "F"

"These Record Drawings have been prepared based on information provided by the Committee. Dayton & Knight Ltd. has not verified the accuracy or completeness of the information provided to them and does not warrant the accuracy or completeness of these Record Drawings. Users of these Record Drawings assume all risk of loss resulting from their use."

ACAD DWG. 163-4-4C 2:1 03-03-22

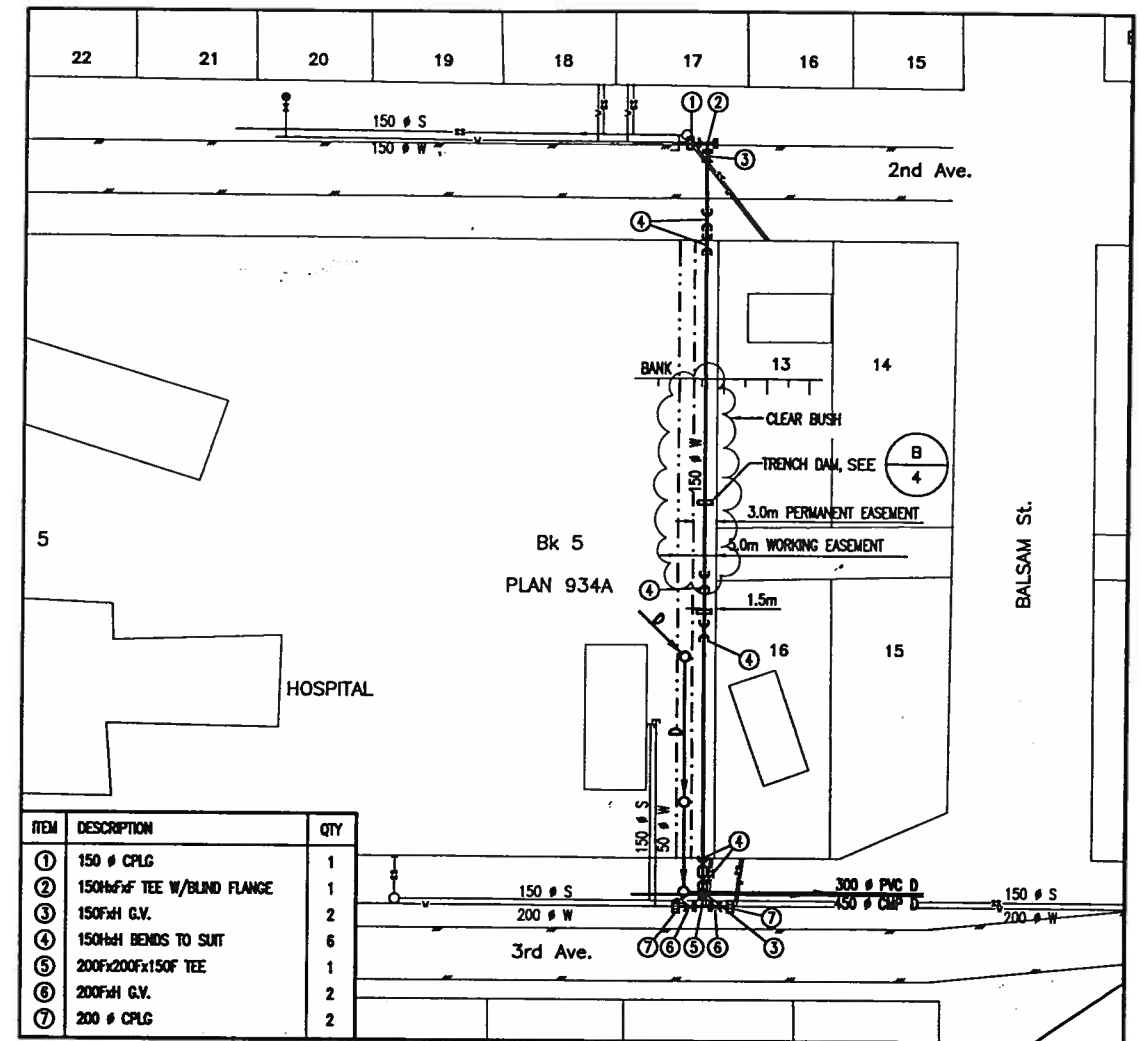
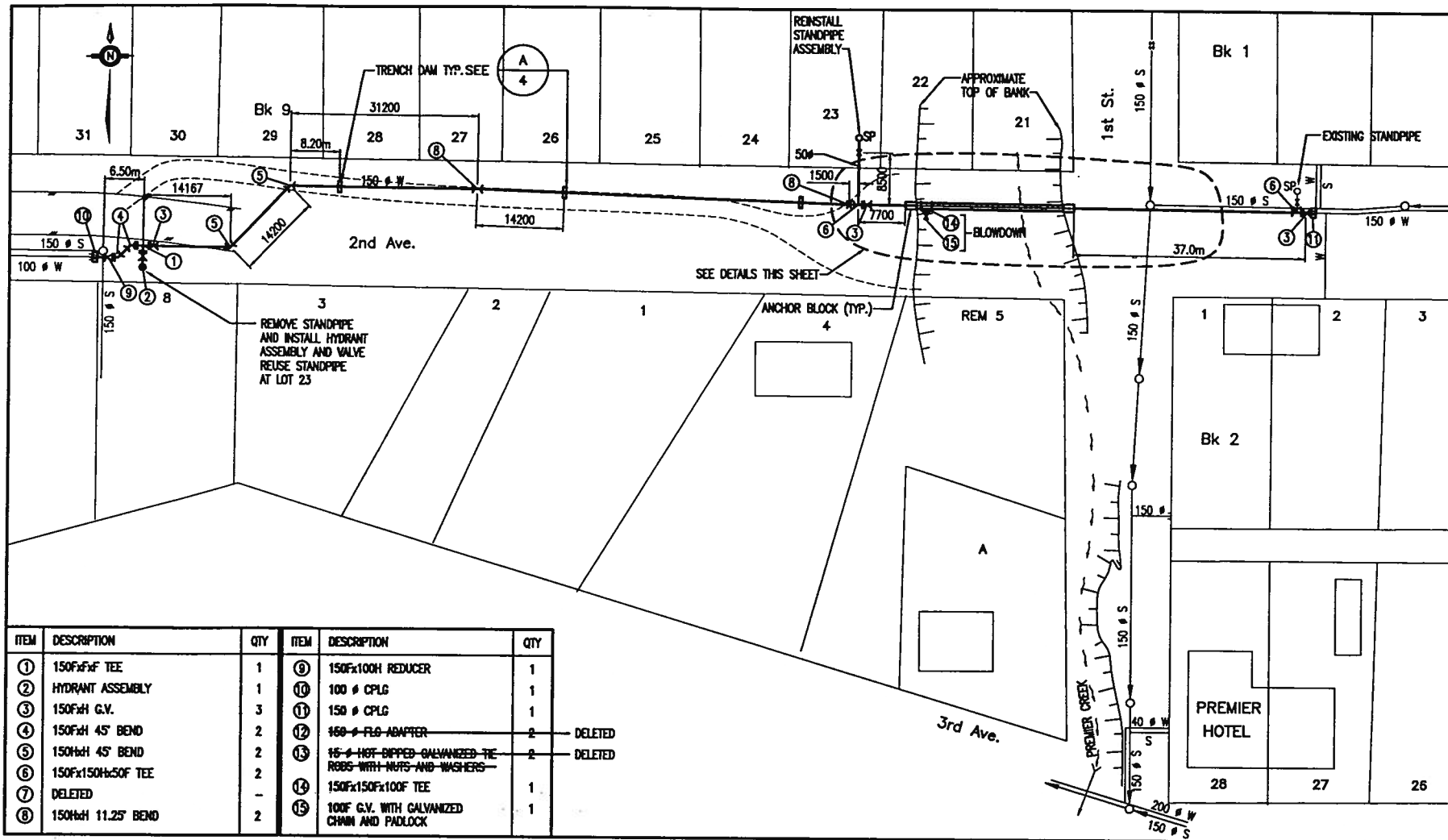
ISSUE	DATE	DRAWN	CHK'D	APP'D	DESCRIPTION	ISSUE	DATE	DRAWN	CHK'D	APP'D	DESCRIPTION
B	MAR17/03	PTL	B.W.	B.W.	RECORD DRAWING						

DESIGNED BW  
 DRAWN ES  
 CHECKED \_\_\_\_\_



QUEEN CHARLOTTE - SKIDEGATE LANDING MANAGEMENT COMMITTEE  
 WATER SYSTEM UPGRADE 2002  
 AREAS A, B, C, D, E, F

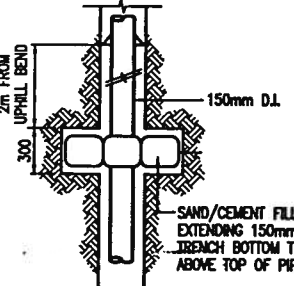
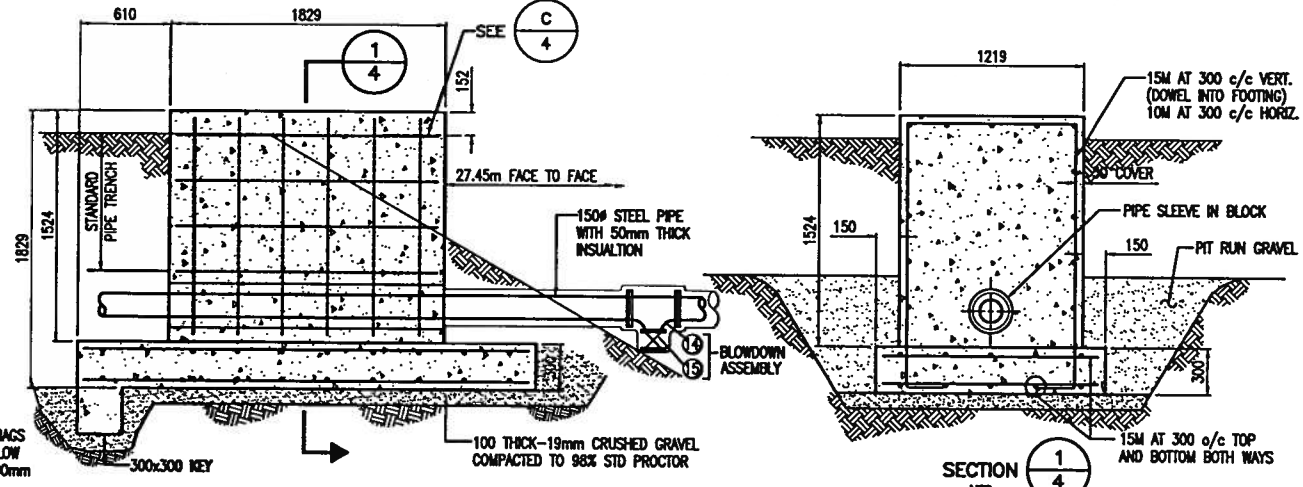
SCALE: 1:500  
 DRAWING No. 163.4.4  
 SHEET 3 OF 5 ISSUE B  
 THIS DRAWING REDUCED TO HALF SIZE



ITEM	DESCRIPTION	QTY	ITEM	DESCRIPTION	QTY
①	150FxF Tee	1	⑨	150F100H Reducer	1
②	Hydrant Assembly	1	⑩	100 # CPLG	1
③	150F x H G.V.	3	⑪	150 # CPLG	1
④	150F x H 45° BEND	2	⑫	150 # FLO ADAPTER	2 DELETED
⑤	150H x H 45° BEND	2	⑬	15 # HOT-DIPPED GALVANIZED TEE ROBS WITH NUTS AND WASHERS	2 DELETED
⑥	150F x 150H x 50F Tee	2	⑭	150F x 150F x 100F Tee	1
⑦	DELETED	-	⑮	100F G.V. WITH GALVANIZED CHAIN AND PADLOCK	1
⑧	150H x H 11.25° BEND	2			

ITEM	DESCRIPTION	QTY
①	150 # CPLG	1
②	150HxF Tee w/BLIND FLANGE	1
③	150F x H G.V.	2
④	150H x H BENDS TO SUIT	6
⑤	200F x 200F x 150F Tee	1
⑥	200F x H G.V.	2
⑦	200 # CPLG	2

AREA "G"



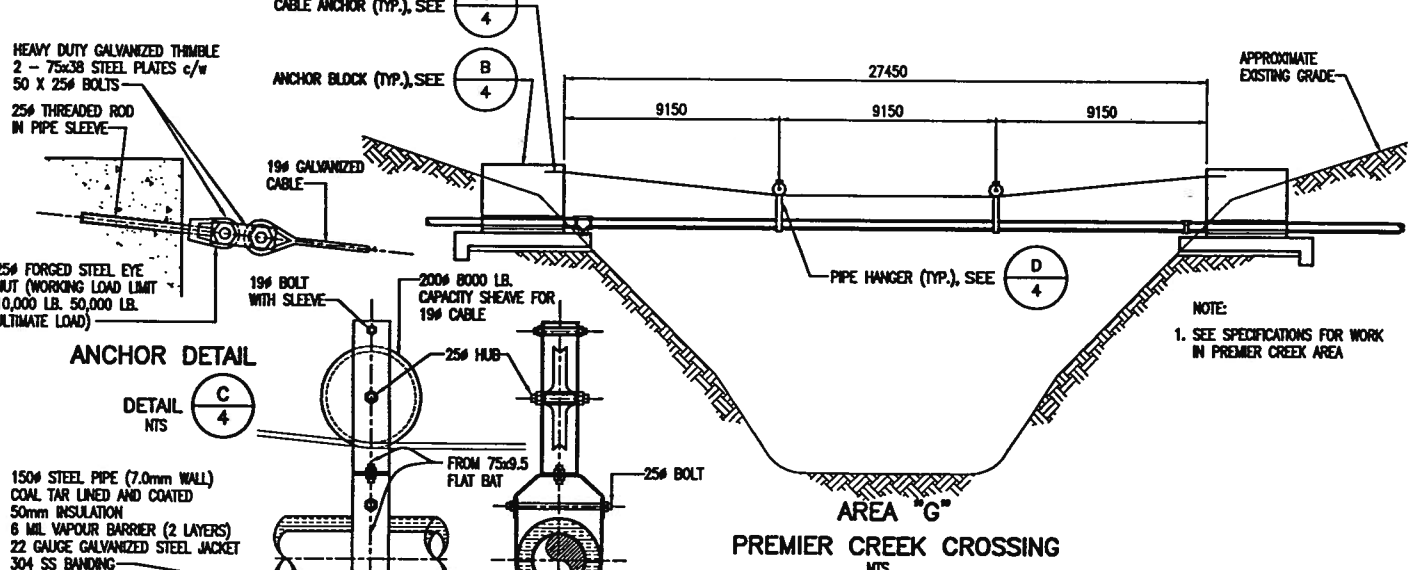
TRENCH DAM - PLAN

DETAIL A  
NTS

ANCHOR BLOCK

DETAIL B  
NTS  
(TYP. FOR 2 EXCEPT BLOWDOWN)

AREA "H"



ANCHOR DETAIL

DETAIL C  
NTS

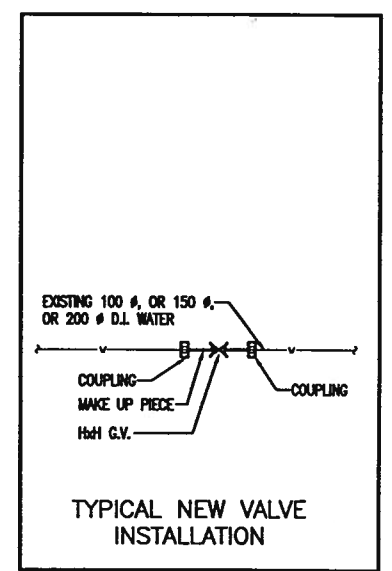
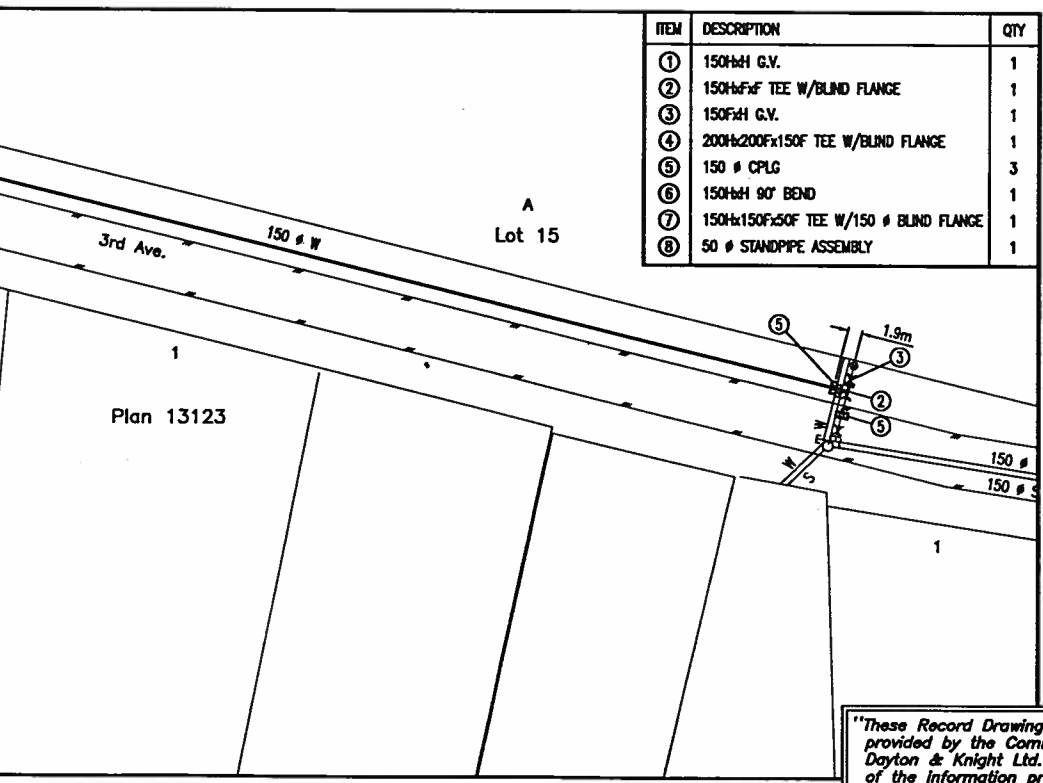
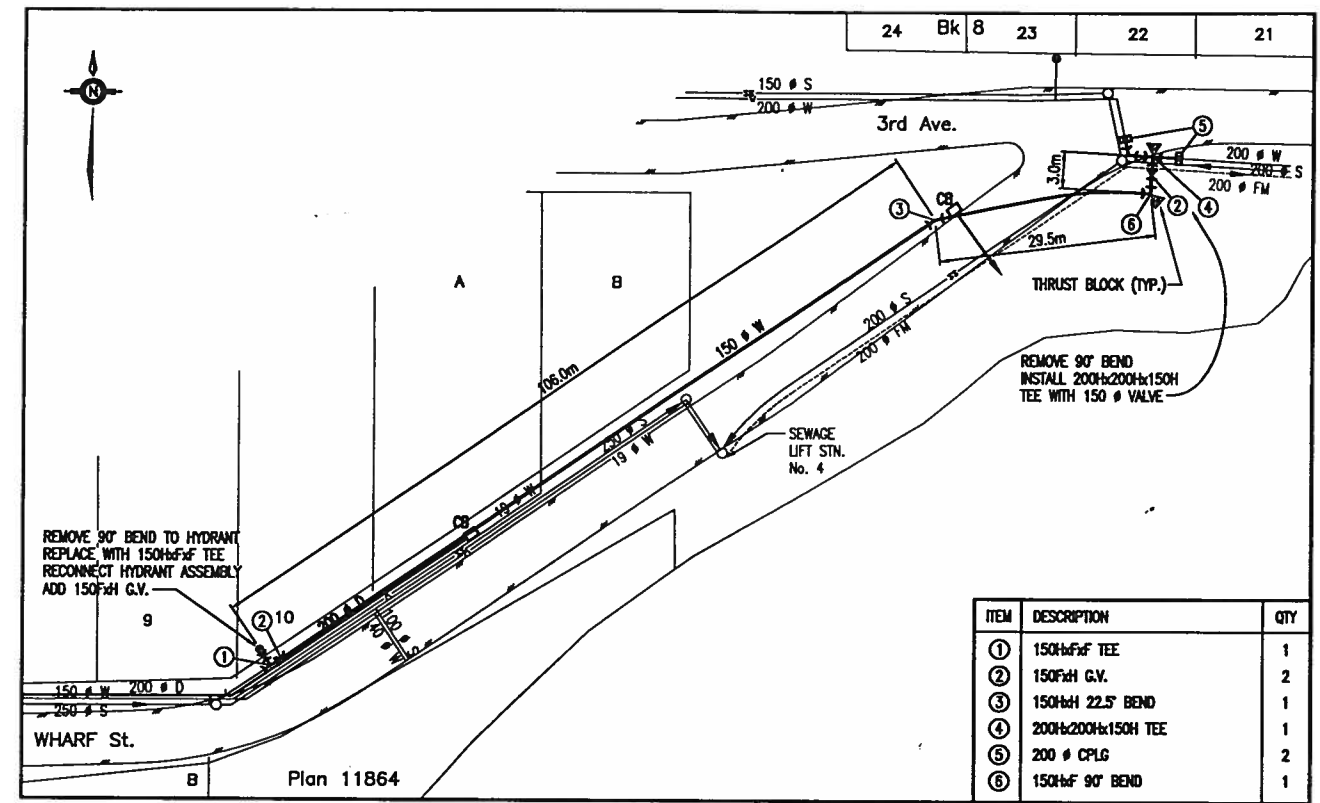
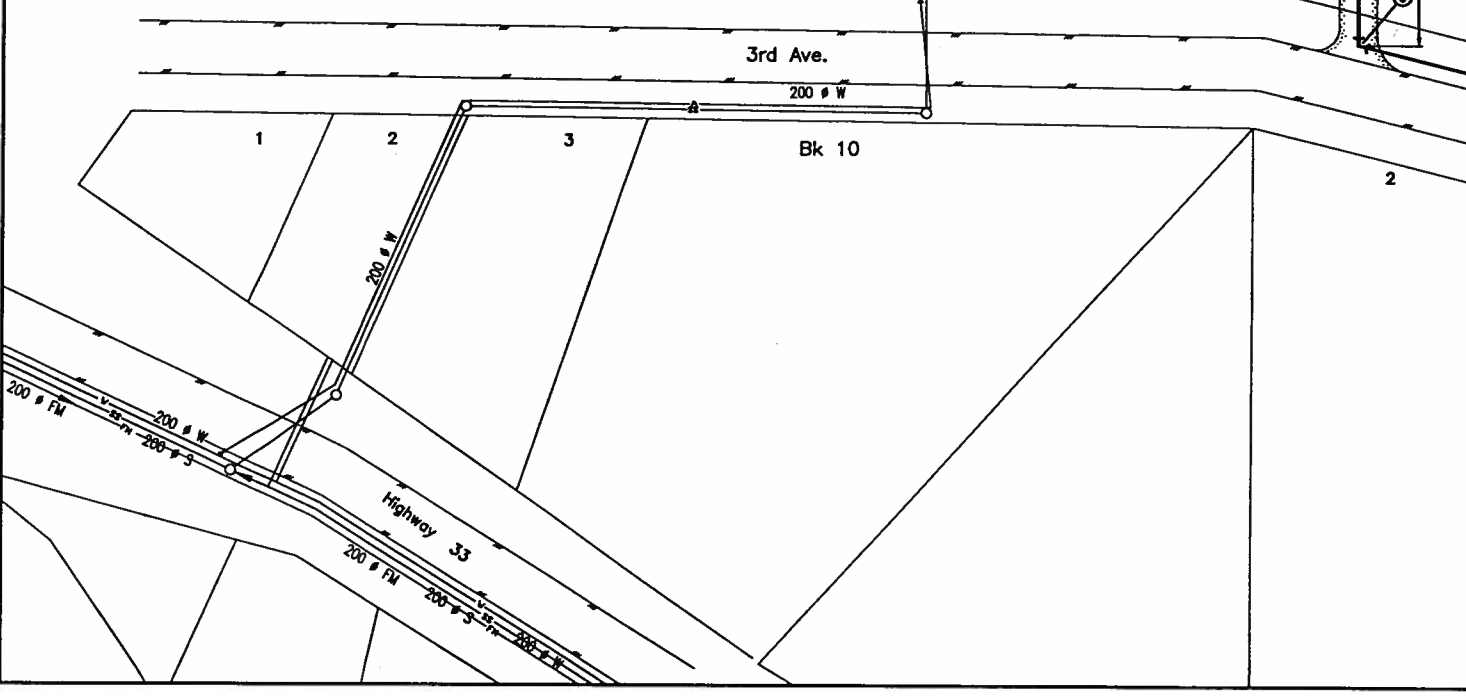
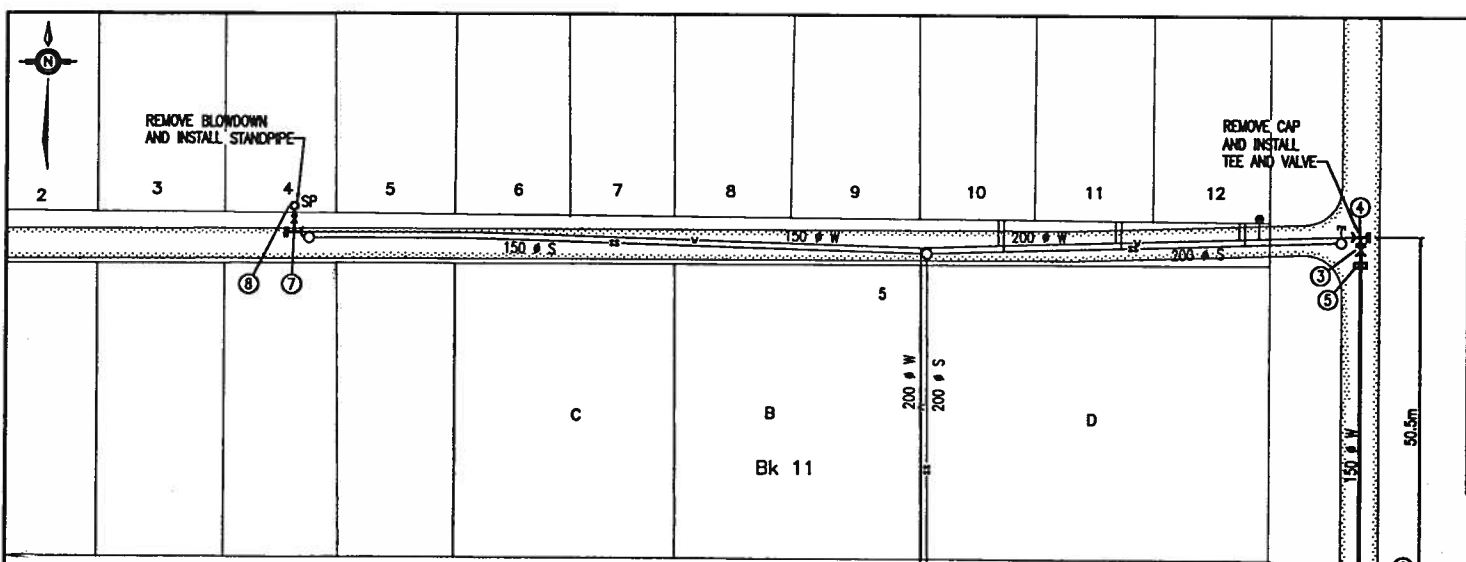
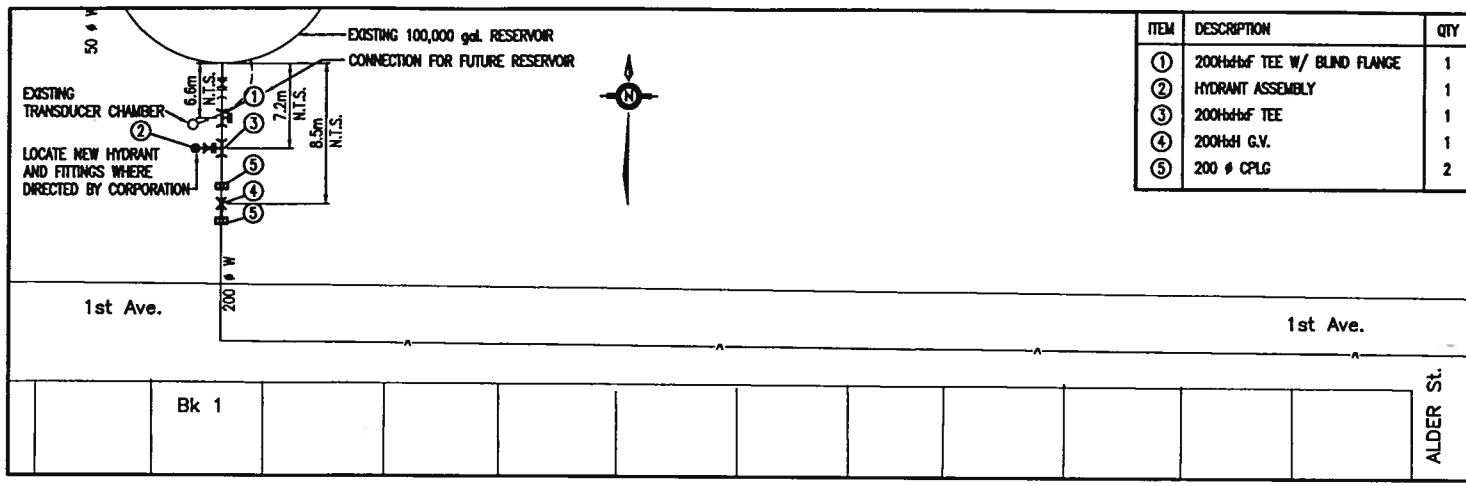
PIPE HANGER DETAIL

DETAIL D  
NTS

PREMIER CREEK CROSSING

NOTE:  
1. SEE SPECIFICATIONS FOR WORK IN PREMIER CREEK AREA

"These Record Drawings have been prepared based on information provided by the Committee and Kootenay Engineering Ltd. Dayton & Knight Ltd. has not verified the accuracy or completeness of the information provided to them and does not warrant the accuracy or completeness of these Record Drawings. Users of these Record Drawings assume all risk of loss resulting from their use."



"These Record Drawings have been prepared based on information provided by the Committee. Dayton & Knight Ltd. has not verified the accuracy or completeness of the information provided to them and does not warrant the accuracy or completeness of these Record Drawings. Users of these Record Drawings assume all risk of loss resulting from their use."